



permedica
ORTHOPAEDICS

JUMP[®] System

TRASER[®]

Trabecular Titanium Cup



**PRODUCT
INFORMATION**



0426



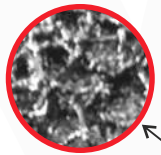
TRASER® *Random Trabecular Laser Technology*

JUMP® System TRASER® cup is obtained through Selective Laser Melting additive manufacturing process, which allows to obtain solid objects from 3D-CAD digital models by adding the raw material (Ti6Al4V powder) layer over layer up to completion of the object.

The randomized size and geometrical shape of the Titanium trabecular surface provides optimal structure for bone in-growth and secondary biological fixation of the implant.

JUMP® System TRASER®

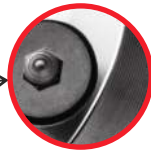
Accepts all types of inserts



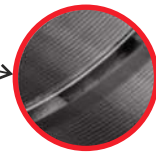
TRASER®
trabecular structure



Removable plugs



Patented insert locking



14 Implant sizes

Hemispherical geometry with polar deflection. **TRASER®** random trabecular structure to ensure strong grip for primary fixation by press-fit insertion and favouring bone ingrowth.

BIOLOX® ceramic inserts locks into the cup thanks to the taper connection. UHMWPE and **VITAL-XE®** inserts, more than the taper connection, locks into the cup thanks to a patented locking system which ensures retention and rotational stability.

Screw holes are sealed by apposite plugs that can be removed in case additional screw fixation is required.

Dual Mobility option

JUMP® System Dual Mobility insert represents an effective solution for those cases where a high possibility of dislocation can be expected (patients with poor muscle tone or neuromotor control).

Metal insert fitting into the cup and accepts ACORN Dual Mobility articular inserts (UHMWPE or **VITAL-E®** / **VITAL-XE®**).

JUMP® System TRASER® Revision

Accepts only PE
and VITAL-XE inserts



17 Implant sizes

TRASER® Revision version has a multi-hole configuration to allow fixation screws placement in a wider area and a range of sizes making it suitable for revision cases.

JUMP® System TRASER® Cementless Cups

Class III

Accepting all types of inserts

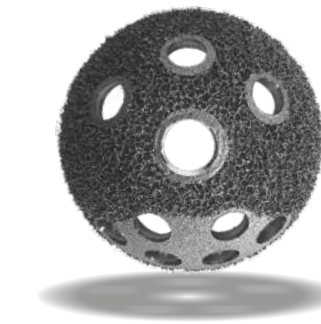


TRASER®	
SIZE	Reference
44	39344
46	39346
48	39348
50	39350
52	39352
54	39354
56	39356
58	39358
60	39360
62	39362
64	39364
66	39366
68	39368
70	39370

TRASER® REVISION	
SIZE	Reference
-	-
-	-
48	39448
50	39450
52	39452
54	39454
56	39456
58	39458
60	39460
62	39462
64	39464
66	39466
68	39468
70	39470
72	39472
74	39474
76	39476
78	39478
80	39480

Special sizes on request

Accepting PE and VITAL-XE inserts



Accessories

Class IIb

Sealing Plug



Polar Plug M10

Reference
35103

Fixation Screws Ø 6,5mm



Length	FLAT Head	
	Reference	
20mm	36720	
25mm	36725	
30mm	36730	
35mm	36735	
40mm	36740	
45mm	36745	
50mm	36750	
60mm	36760	

JUMP SYSTEM Articular Inserts

Class III

ATTENTION:
The COLOUR CODING refers to CUP / INSERT coupling.



Neutral
0°



Hooded
10°



Hooded
20°

	UHMWPE			VITAL-XE®			BIOLOX® delta	
	0°	10°	20°	0°	10°	20°	0°	
	Reference	Reference	Reference	Reference	Reference	Reference	Reference	
Ø socket	28mm	36301	36363	36302	36301XE	36363XE	36302XE	36005*
		36305	36364	36306	36305XE	36364XE	36306XE	36008*
		36311	36365	36312	36311XE	36365XE	36312XE	36006*
		36307	36366	36308	36307XE	36366XE	36308XE	36009*
		36309	36367	36310	36309XE	36367XE	36310XE	36010*
32mm		36313	36368	36314	36313XE	36368XE	36314XE	36011
		36319	36369	36320	36319XE	36369XE	36320XE	36016
		36315	36370	36316	36315XE	36370XE	36316XE	36015
		36317	36371	36318	36317XE	36371XE	36318XE	36017
								36018
36mm				36380XE	36382XE	36381XE	36022	
		36325	36329	36326	6325XE	36329XE	36326XE	36025
		36327	36330	36328	36327XE	36330XE	36328XE	36026
40mm		36346		36347	36346XE		36347XE	36041
		36348		36349	36348XE		36349XE	36042

JUMP System Dual Mobility option

Class III



BIOLOY®
TiN-BN COATING

BIOLOY®
PM734

Cup size	color code	Reference
44-46	BLACK	36215
48-50	YELLOW	36211
52-54	GREY	36212
56-60	BLUE	36213
62+	RED	36214

Ø inner	Ø outer	color code	UHMWPE	VITAL-E®	VITAL-XE®	
			Reference	Reference	codice	
28 mm	22mm	36mm	BLACK	38844	38844E	38844XE*
		38mm	YELLOW	38846	38846E	38846XE*
		40mm	GREY	38848	38848E	38848XE*
		44mm	BLUE	38852	38852E	38852XE*
		46mm	RED	38854	38854E	38854XE*

Information

INTENDED PURPOSE:

JUMP® System TRASER® is an acetabular component for cementless applications to be used in Total Hip Replacement procedures in combination with an articular liner, a femoral ball-head and a femoral stem. Indicated in primary and revision hip arthroplasties, all cases of coxarthrosis where the bony tissue is suitable enough to guarantee a correct and stable primary mechanical press-fit fixation.

Anchorage of the device to the bone is achieved by press-fit insertion. Whenever necessary, fixation can be improved by using cancellous bone screws inserted into the dedicated holes.

STERILIZATION:

Method: Ethylene Oxide (EtO) or irradiation (Beta/Gamma rays - minimum dose 25 kGy) or Vaporized Hydrogen Peroxide (VH2O2).

Validity: 5 years (Beta sterilized products) - 10 years (EtO/Gamma/VH2O2 sterilized products).

CLASSIFICATION:

Class III or IIb as reported in Directive 2005/50/CE (and related D.lgs 26 april 2007 n.65) concerning re-classification of Hip, Knee and Shoulder joint prostheses which modifies classification criteria of Annex IX of Directive 93/42/CEE and next integrations and amendments.

Materials

CUPS, SCREWS, PLUGS:

Titanium Aluminium Vanadium Ti6Al4V Alloy - ISO5832/3.

INSERTS:

UHMWPE: Ultra High Molecular Weight Polyethylene without Calcium Stearate - ISO5834/1/2.

VITAL-XE®: cross-linked UHMWPE without Calcium Stearate added with Vitamin E - ISO5834/1/2

VITAL-E®: UHMWPE without Calcium Stearate added with Vitamin E - ISO5834/1/2.

CERAMIC: **BIOLOX® delta** mix of Alumina and Zirconia Oxide (Al₂O₃ + ZrO₂) - ISO6474.

Metal Dual Mobility:

- PM734 highly nitrogenized Stainless Steel forged alloy ISO5832/9

SURFACE FINISHING:

TRASER®: Randomized trabecular metal structure with average pores SIZE of 650µm.

BIOLOY®: TiNbn coating (Dual Mobility inserts)

www.permedica.it

**CHALLENGING EXCELLENCE
IN TECHNOLOGY**